



✕ 25 Year System Warranty

✕ Supports Gigabit Ethernet

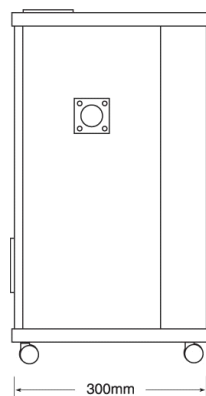
✕ No.3 cabling system by market share, as reported by BSRIA

Features

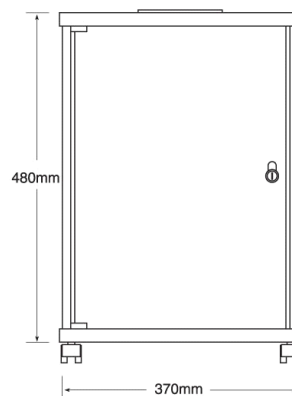
- 25 Year System Warranty
- Ideal where space is at a premium
- Removable vented side panels
- No.3 cabling system by market share, as reported by BSRIA
- Supports Gigabit Ethernet
- Range of accessories in black or beige
- Adjustable patch panel mounting profiles

Product Overview

The Excel Microlan system is ideal for small and medium sized cabling installations and for sites where space is at a premium, making the standard 19" rack system impractical. The broad range of copper, fibre and active components ensure that all requirements can be met and housed neatly in the compact, unobtrusive Microlan Cabinet. The entire product range and completed installation is supported by a no nonsense product and applications warranty when installed by an accredited Excel Cabling Partner.



Cabinet Side Aspect



Cabinet Front Aspect

EXCEL MICROLAN - CABINET

The Excel MicroLan is ideal for installations where space is at a premium for example educational or small office networks. The MicroLan 10U cabinet is available with a range of accessories in black. Each cabinet has removable vented side panels and adjustable panel mount profiles to ensure quick and easy installation and maintenance. Cable entry cut outs are placed in the top, rear and base of the cabinet to cover all applications. The cabinet can easily be fixed to the wall or positioned directly onto the floor.

Features

- Compact 10U Height
- Removable Vented Side Panels
- Smoked Perspex Front Door
- Adjustable patch panel mounting profiles



Cabinet Part Number Information

Part No.	Description
100-762	MicroLan 10U Cabinet Black

EXCEL MICROLAN - CATEGORY 5e PATCH PANELS

MicroLan Category 5e Patch Panels are available in 12 port 1U and 24 port 2U versions each with an easy to use screen printed labelling system. Each panel is supplied with a cage nut and cable ties.

Features

- Category 5e Compliant



Patch Panel Performance & Specification

Specification:	Category 5e ISO Class D 1999, ANSI/TIA-568-C.2
Wiring Specification:	T568A/B
Port Density:	12 Ports Per 1U (44mm)
Dimensions:	248mm wide x 33mm deep x 44mm (1U) or 88mm (2U) high
RJ45 Jack:	Min life 700 insertions
RJ45 Jack:	50 Micro-inch Gold Plated contact pins
IDC Contacts:	Suitable for Krone/110 Termination. Maximum 100 reterminations
NEXT at 100MHz:	Category 5e Specification 43dB @100MHz (Worst Pair)
FEXT at 100MHz:	Category 5e Specification 35dB @100MHz (Worst Pair)

Patch Panel part Number Information

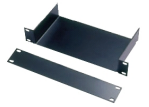
Part No.	Description
100-754	MicroLan 1U Category 5e 12 Port Panel, Black
100-756	MicroLan 2U Category 5e 24 Port Panel, Black

EXCEL MICROLAN - SHELVING/MANAGEMENT

MicroLan Shelves are ideal for mounting routers, hubs or repeaters. MicroLan cable management bars ensure patching is kept tidy and easy to manage. Blank plates complete the range.

Features

- Supplied with Cage Nut fixings



Shelving/Management Part Number Information

Part No.	Description
100-766	MicroLan 1U Shelf, Black
100-770	MicroLan 1U Cable Management, Black
100-780	MicroLan 1U Blank Plate, Black

EXCEL MICROLAN - FIBRE PANELS

The Excel MicroLan cabinet is ideal for fibre links in campus or warehouse environments.



Fibre Panel Part Number Information

Part No.	Description
100-776	MicroLan 1U 8 Port ST Patch Panel, Black

EXCEL MICROLAN - POWER DISTRIBUTION UNITS

The Excel 2 and 4 way power distribution units are mounted quickly and easily on the rear panel of the cabinet. These units can be used to power hubs, routers etc. Each unit is supplied with a 2 metre lead to connect to the mains.

Features

- Choice of 2 or 4 Way
- Supplied with required fixings



PDU Part Number Information

Part No.	Description
100-773	MicroLan 2 Way Power Distribution Unit
100-774	MicroLan 4 Way Power Distribution Unit

EXCEL MICROLAN - VENTILATION KIT

Each MicroLan Cabinet is supplied with vented side panels, ventilation can be improved with the use of these easy to fit fan units. Each is supplied with fixing screws and 500mm mains lead.

Features

- Easy to install
- Supplied with fixing kit



Ventilation Part Number Information

Part No.	Description
100-788	MicroLan Side Panel Fan Kit

EXCEL MICROLAN - MOUNTING ACCESSORIES

Excel Category 5e RJ45 modules comply with the ANSI/TIA-568-C.2 Category 5e standards. Each shuttered module is supplied with a slide label field and space above, this is allowed for use of self adhesive or further labelling if required. Termination can be made using either Krone or 110 tooling, a cable tie base is positioned between the IDC blocks to relieve cable stress. Pre assembled faceplates can be ordered to save installation time.

Features

- Independently verified to Category 5e standard
- Built in slide label system
- 50 x 25mm Cut out
- Dual IDC blocks
- Fits 27mm back box when used with bevelled faceplate
- 25 year product warranty
- Low profile module 21mm deep
- System warranty available



RJ45 Performance & Specification

Specification:	Category 5e ISO Class D1999, ANSI/TIA-568-C.2
Wiring Specification:	T568A/B
Dimensions:	25mm wide x 34mm deep x 50mm high
Installation Recommendation:	Suits minimum of 27mm Back Boxes when installed with Bevelled Faceplate
RJ45 Jack:	Min life 700 insertions
RJ45 Jack:	50 Micro-inch Gold Plated contact pins
IDC Contacts:	Suitable for Krone/110 Termination. Maximum 100 reterminations
NEXT at 100MHz:	Category 5e 40dB @100MHz (Power Sum)
FEXT at 100MHz:	Category 5e 32dB @100MHz (Power Sum)

RJ45 Modules Part Number Information

Part No.	Description
100-700	Category 5e Unscreened (UTP) Module - Euromod, RJ45, White
100-702	Category 5e Unscreened (UTP) Module - Euromod, RJ45 (including Bevelled Plate and Blanks)
100-704	Dual Category 5e Unscreened (UTP) Module - Euromod, RJ45, White (including Bevelled Plate)
100-760	Category 5e Unscreened Module, RJ45, Low Profile - Euromod, White

MOUNTING HARDWARE - FACEPLATES

Excel faceplates are available in bevelled or flat styles to suit all installations.

Features

- Supplied with fixing screws
- Choice of bevelled or flat style
- Choice of blanking plates
- Screen printing option available



Faceplate Part Number Information

Part No.	Description
100-712	Single Gang Bevelled Plate without Blanks
100-714	Single Gang Flat Plate without Blanks, White
100-716	Double Gang Bevelled Plate without Blanks
100-718	Double Gang Flat Plate without Blanks
100-715	Half Width (12.5mm) Blank Plate
100-719	Full Width (25mm) Blank Plate

MOUNTING HARDWARE - BACK BOXES

A range of single and double gang high quality Back Boxes.

Features

- Choice Of Single Or Double Gang
- Choice Of Depth



Back Boxes Part Number Information

Part No.	Description
100-612	Single Gang 27mm Deep Back Box
100-614	Single Gang 32mm Deep Back Box
100-616	Single Gang 37mm Deep Back Box
100-618	Single Gang 47mm Deep Back Box
100-619	Double Gang 27mm Deep Back Box
100-620	Double Gang 37mm Deep Back Box
100-622	Double Gang 47mm Deep Back Box

EXCEL MICROLAN - PATCH LEADS

To ensure tidy and easy to maintain patching within MicroLan cabinets 250mm Category 5e patch leads are available.

Features

- Individually Bagged
- Choice of Colour
- Longer Lengths Available



Patch Lead Part Number Information

Part No.	Description
BBxxxMPLyy	Excel Category 5e Blade Boot RJ45 Patch Lead

xxx = Length 0.2 to 30 Metre Available

yy = Colours available:

Grey (GE), Red (RD), Blue (BU), Black (BK), Green (GN), Yellow (YW), Violet (VT) White (WT), Orange (OR) & Pink (PK)

CATEGORY 5e UNSCREENED TWISTED PAIR (U/UTP) CABLE

Excel solid conductor Category 5e is an independently verified 4 pair U/UTP cable which conforms to current standards for enhanced performance Category 5e cable



Features

- Category 5e Enhanced Performance
- Power Sum Compliant
- Tested for FEXT And Return Loss
- Choice of lengths (Grey only)

Frequency (MHZ)	Impedance (Ohm)	Return Loss (dB)	Attenuation (dB/100m)	NEXT Worst Pair (dB)	NEXT Power Sum (dB)	ELFEXT Worst Pair (dB)	ELFEXT Power Sum (dB)	Velocity of Propagation (%)
0.772		—	1.8	67	64	—	—	
1.0		19	2.0	66	62	64	61	
4.0		20.8	4.1	57	53	52	49	
8.0		21.7	5.8	52	48	46	43	
10.0		22	6.5	51	47	44	41	
16.0	100 ± 15	22	8.2	48	44	40	37	65
20.0		22	9.3	46	42	38	35	
25.0		21.3	10.4	45	41	36	33	
31.25		20.6	11.7	43	39	34	31	
62.5		18.5	17.0	39	35	28	25	
100.0		17.1	22.0	36	32	24	21	

Category 5e UTP Cable Part Number Information

Part No.	Description
100-065	Category 5e Unscreened (U/UTP) Cable, 305m Box
100-059	Category 5e Unscreened (U/UTP) Cable, Grey - 500m Box
100-060	Category 5e Unscreened (U/UTP) Cable, LSOH, White, 305m Box
100-061	Category 5e Unscreened (U/UTP) Cable, LSOH, Red, 305, Box
100-062	Category 5e Unscreened (U/UTP) Cable, LSOH, Blue, 305m Box
100-063	Category 5e Unscreened (U/UTP) Cable, LSOH, Green, 305m Box
100-064	Category 5e Unscreened (U/UTP) Cable, LSOH, Yellow, 305m Box

Excel is a world-class premium performing end-to-end infrastructure solution - designed, manufactured, supported and delivered - without compromise.

Contact us at sales@excel-networking.com

excel
without compromise.